

ROARING WATER BAY

1



RWB ROPE MUSSELS

MUSSEL/SEED SITES

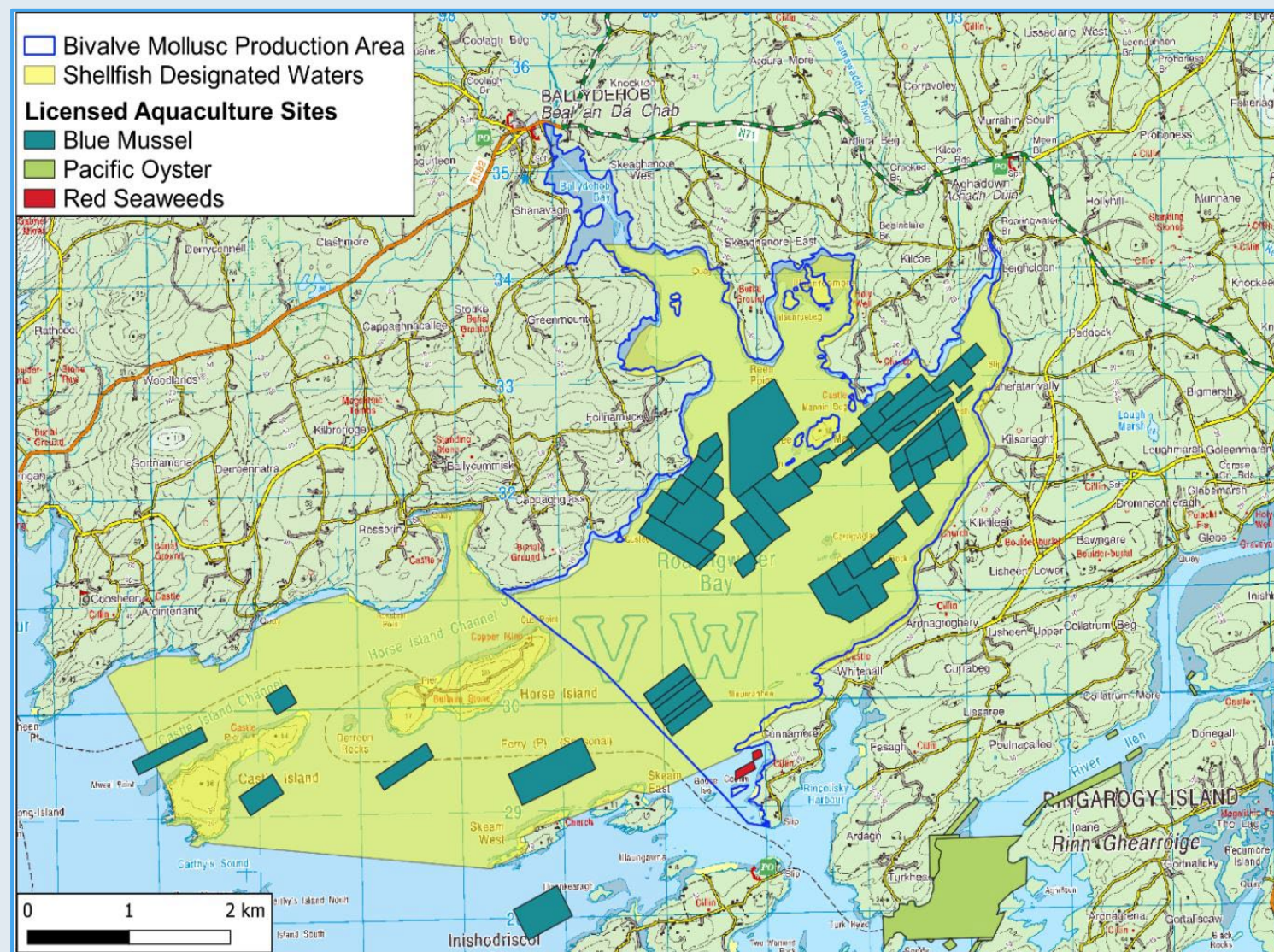
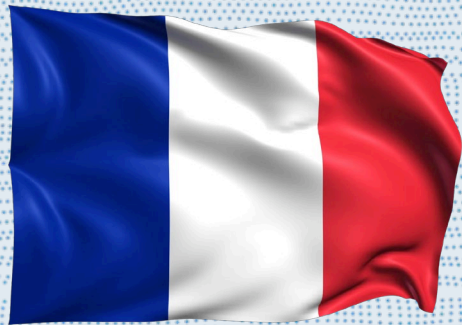


Fig 1 : Aquafact

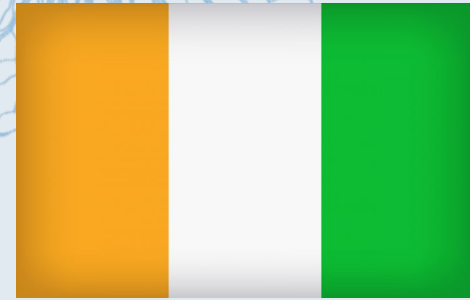
MAIN MARKETS



France



Italy



Ireland/UK

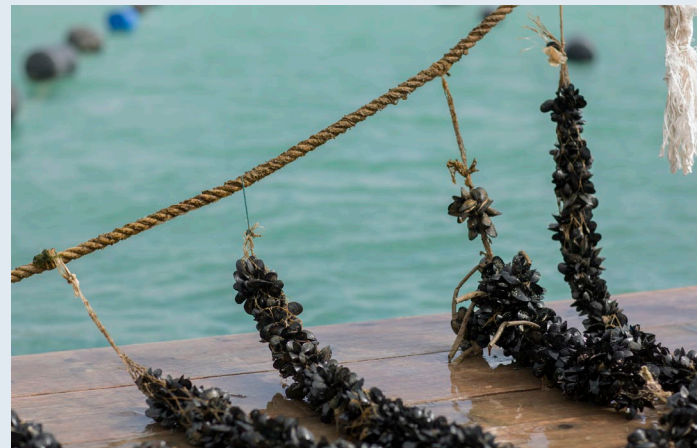
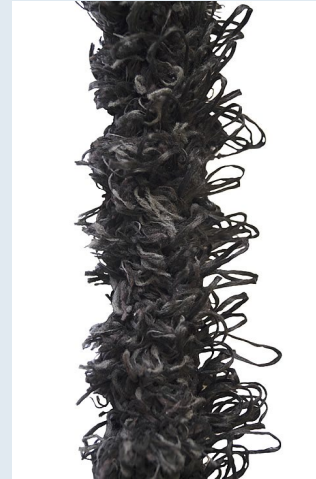
Harvesting year-round
with Class A waters

SEED COLLECTION METHODS

Natural Seed Collection

Generally collector hung in April/May

Continuous collector/Single "droppers"



RECENT ISSUES

5

Seed failure



Costs of business

- Haulage price increases
- Diesel/General costs inflating

French Market reduction

- Bay backed up with 2022/2023 mussel
- Reduction in space for properly thinned seed
- Reduced growth

TRIALS / SOLUTIONS

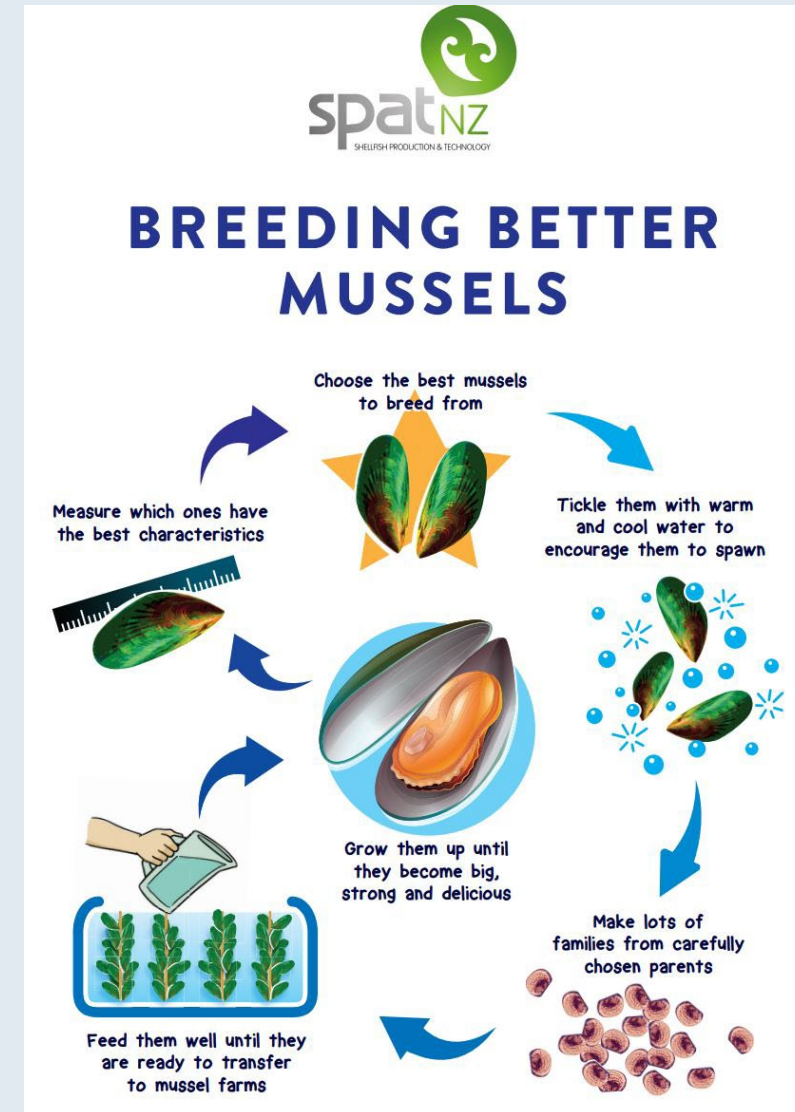
SEED

- Research into pre-seeded ropes to deploy in seed areas
- Water consistency sampling to monitor natural mussel spawns in seed collection areas



Fig 2 : SpatNZ

Fig 3 : SpatNZ



GROWTH

- Markets improved alleviating growth issues
- Reducing mussel density socked in dense line areas to improve growth