

# Common Gross Gill Pathology Chart

# Common Gross Gill Pathology Chart

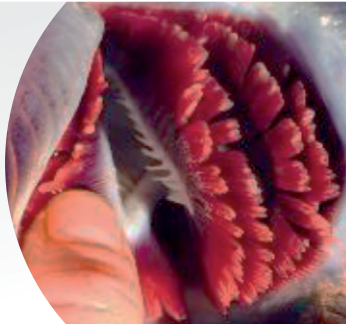
## Pale gills

(Diffuse appearance - all gill area is pale. This should always be a TGS (Total Gill Score) 4)



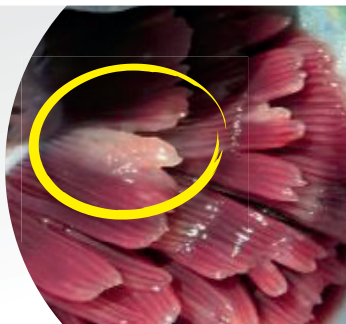
## Pale gill tips

(Most of filament is red in colour apart from tip(s). This may include gill tips that just appear pale in colour as well as necrotic filament tips)



## Necrotic Patches or stripes

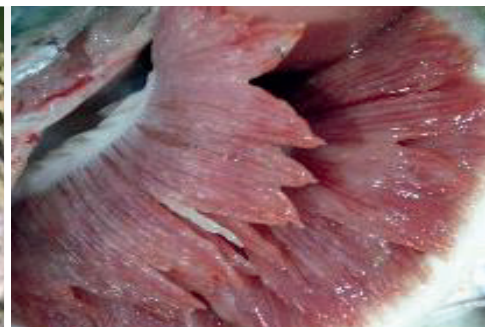
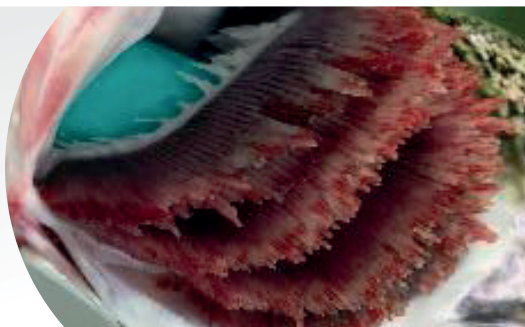
(Defined area of dead gill tissue)



© Hamish Rodger

## Diffuse Necrosis

(More widespread, generalised necrotic change)





## Gill Bleeding



## Petechial haemorrhages

(AKA pin-prick haemorrhages)



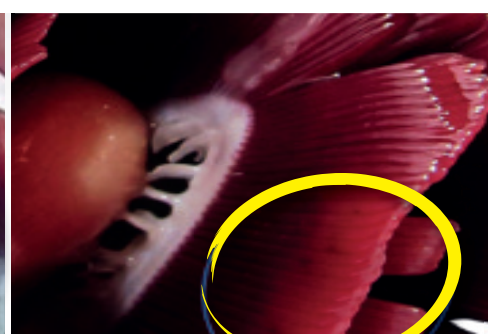
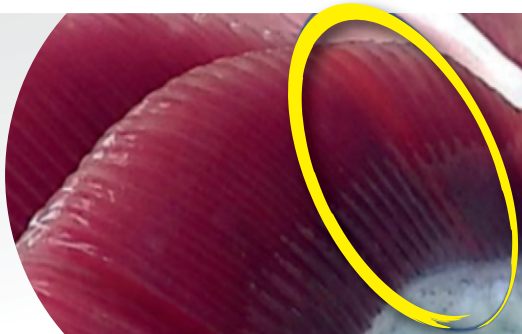
## Diffuse hyperaemia

(Gills are bright red - more intense or darker red than usual)



## Focal Hyperaemia

(Distinct area is more bright red in colour than rest of gills. May be seen as a "patch" or "stripe")



## Burn on gill rakers

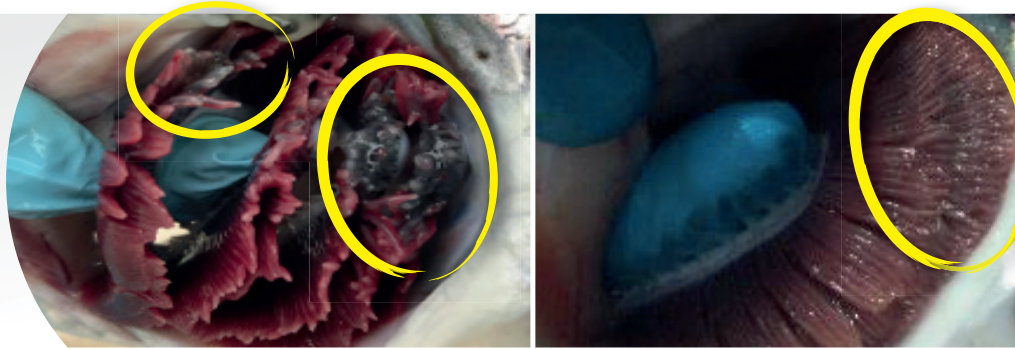




# FVG Common Gross Gill Pathology Chart

## Melanisation/ melanosis

(Black discolouration  
to gill tissue)



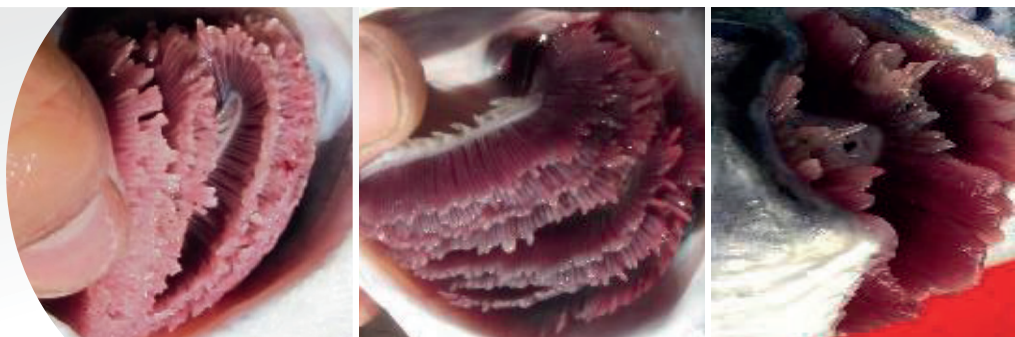
## Flat white marks, patches or spots



## Raised white marks or patches



## Shortened Filaments



If you observe abnormal gill appearance that does not look like any of these photos and you are unsure of the cause or how to describe it, take some photos and send to your health team for advice.