



Bord Iascaigh Mhara  
Irish Sea Fisheries Board

## Seed Mussel Survey Report update for the Wicklow Area – 25 to 30/07/2013

**Vessel:** MV T'Burke (BIM), Skipper John Murphy, Survey Officer Nicolas Chopin

**Equipment:** 400 kHz side scan sonar, 1 meter dredge.

**Area surveyed:** From Six Miles Point to North Brittas Bay to the North Arklow Buoy to the India North Buoy

### Survey summary:

No seed was found during the first survey (April/ May) in Wicklow, only a few signs of possible settlements were observed around Seapark Point/ Ardmore Point. Due to the cold spring, there was the possibility for a later settlement of larvae so a repeat survey was recommended.

The repeat survey was carried out at the end of July. No seed was found in the areas where some signs of seed were previously found. The side scan sonar was deployed between two formerly covered areas, but no possible seed features were observed. The data shows a lot of large stones outcrops which makes dredging difficult.

An area between north Brittas Bay and the North Arklow Buoy was checked but only stones were found.

Finally, a large area north of Wicklow Head was checked but again no seed was found.

**Bottom type:** the seabed around Wicklow has not shown any signs of improvement since last year, very little life was observed on the stones south of the Head. Fine sand is piling up behind the Horseshoe Bank.

Nicolas Chopin  
Inshore Survey Officer  
BIM Aquaculture Technical Section

### Note for the map:

TW stands for Tow Wicklow

GW stands for Grab Wicklow

In the legend dgd stands for dredge

In the legend gb stands for grab

[illegible]

Nicolas Chopin - BIM Aqua. tech. Section - 02/08/2013



Bord Iascaigh Mhara  
Irish Sea Fisheries Board

## **Seed Mussel Survey Report for the Wicklow Area – 23/04/2013 to 16/05/2013**

**Vessel:** MV T'Burke (BIM), Skipper John Murphy, Survey Officer Nicolas Chopin, Ben Dallaghan.

**Equipment:** 400 kHz side scan sonar, 1 meter dredge, 0.1m<sup>2</sup> Day grab.

**Area surveyed:** from Five Miles Point (North) to Ballynacarrig/ Jack's Hole (South) on the coast and the North end of the Arklow Bank (South) to the edge the India Bank Channel (North) on the seaward side.

### **Survey summary:**

The seed mussel areas found on rough ground last year were checked for over wintered seed. Only few clumps with a lot of starfish and mortality were found in those areas.

The side scan sonar was deployed in five locations (see map), south of Wicklow the ground is still very rough and hard, a lot of large boulders were observed and no seed mussel settlement features were found. Few interesting features were investigated but no signs of seed were found (see Targets marks on map).

The dredge was deployed many times but nothing was found but stones and old shells.

The grab was deployed twice but only caught two stones. Due to the hardness of the ground and weather /tide conditions, the grab has not been used further.

Due to very bad water visibility the underwater camera was not deployed.

**Bottom type:** The seabed is still very rough with a lot of boulders and stones south of Wicklow Head. The ground is a bit smoother to the North (along side the channel), mainly small stones, gravel and coarse sand.

### **Recommendations:**

Although nothing has been found around Wicklow yet, the season is still at an early stage. The seabed, south of the head, is still slowly recovering from the 2010/2011 winter storms.

Nicolas Chopin  
Inshore Survey Officer  
BIM Aquaculture Technical Section

### Notes for the map:

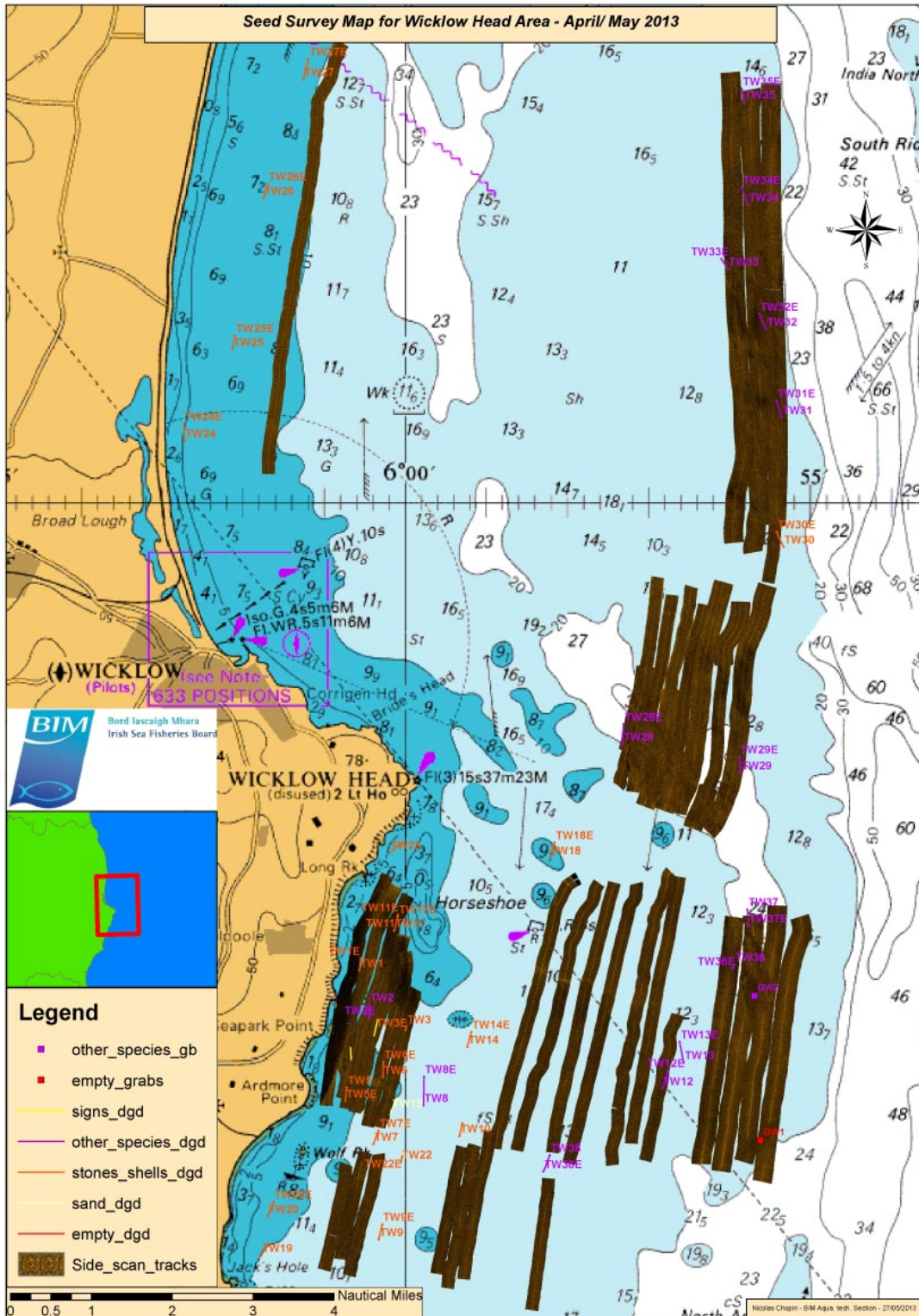
TW stands for Tow Wicklow

GW stands for Grab Blackwater

dgd stands for dredge in the map legend

gb stands for grab in the map legend







# Seed Survey Map for Wicklow Head Area - April/ May 2013

