



Bord Iascaigh Mhara  
Irish Sea Fisheries Board

## Seed Mussel Survey Report for the Blackwater Bank Area – 29/05/12 to 01/06/12

**Vessel:** MV T'Burke (BIM), Skipper John Murphy, Survey Officer Nicolas Chopin

**Equipment:** 400 kHz side scan sonar, 1 meter dredge

**Area surveyed:** From Ballyvaldon to Blackwater Head on the shore to the Rusk Channel Buoy No.1 to the West Blackwater Buoy at sea.

### Survey summary:

The shallow waters North of Wexford harbour have been checked with the side scan sonar, a few promising marks werer investigated but no seed or spat traces were found.

Following those results, it was decided to check the deeper grounds alongside the Blackwater bank. Some small seed was found in the tow TB12, the side scan sonar was then deployed and a clear ground difference appears between sand banks. Seed was found all along that harder ground strip.

Bed coordinates (in WGS 84 degrees, decimal minutes):

| Latitude      | Longitude    |
|---------------|--------------|
| 52° 27.430' N | 6° 12.044' W |
| 52° 26.653' N | 6° 12.640' W |
| 52° 26.003' N | 6° 13.189' W |
| 52° 25.793' N | 6° 13.573' W |
| 52° 26.440' N | 6° 13.149' W |
| 52° 27.142' N | 6° 12.433' W |
| 52° 27.430' N | 6° 12.044' W |

NOTE: The area displayed on the attached map has been established following the side scan sonar data verified using the dredge. These coordinates represents a simplified polygon of the possible settlement.

This strip is approximately 3km in length and varies from 70 to 300 meters in width, it represents approximately 79 hectares. The depth varies from 20 to 25 meters. The seed is still very small but well settled on old oyster shells; its size varies from 3 mm to 20 mm with 90 % of the population sampled between 5 and 14 mm. A small amount of starfish was found in the dredges. As yet no grab samples have been taken so no estimation of tonnage is available. Grab sampling will be carried out in the coming weeks.

**Bottom type:**

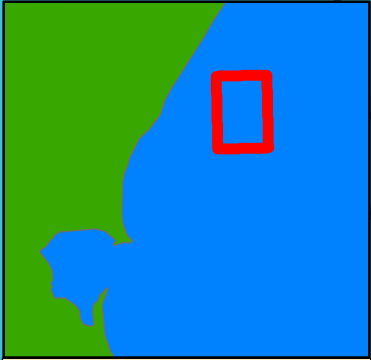
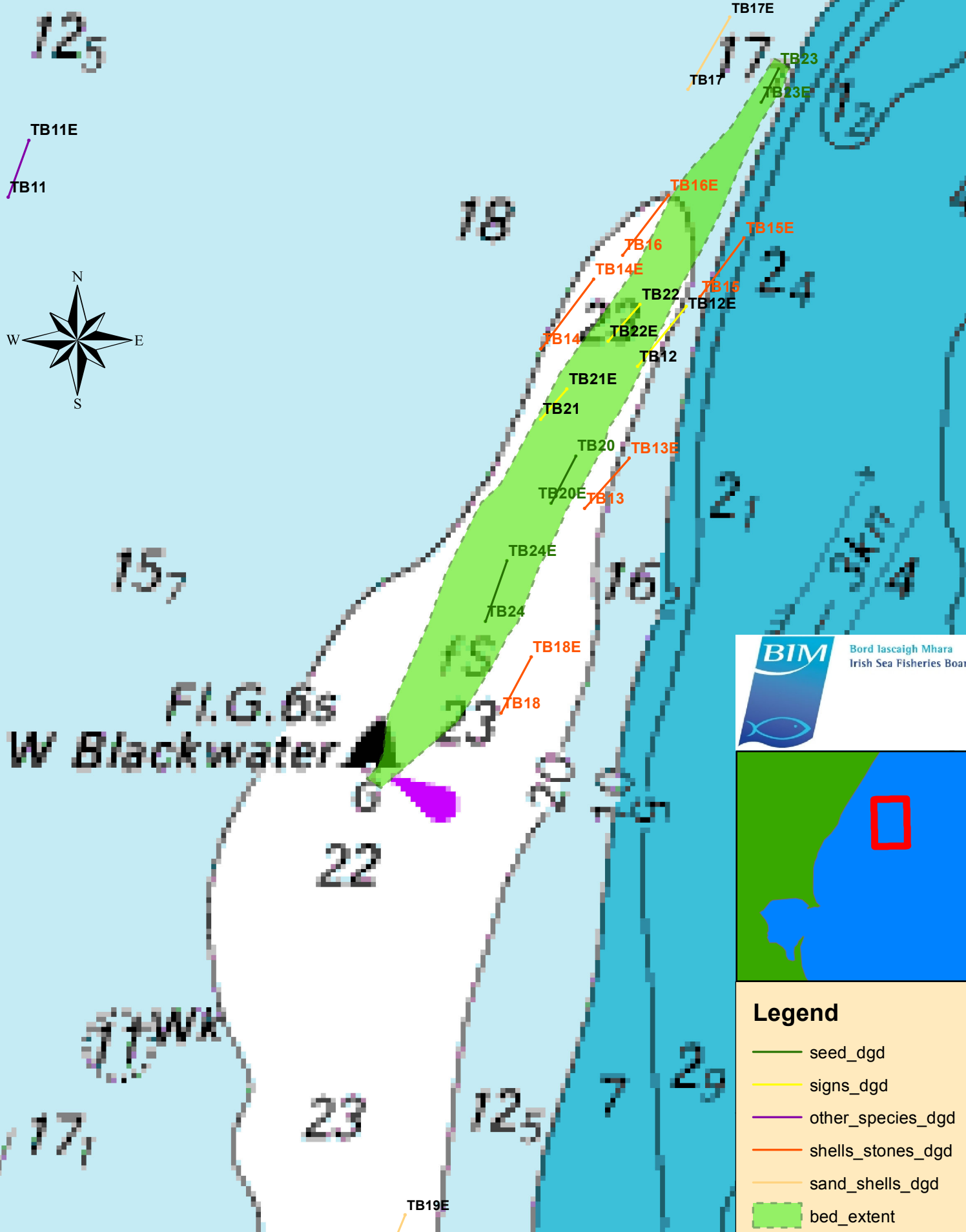
The seed is settled on old native oyster shells. The settlement is surrounded by sand banks.

**Recommendations:**

This settlement is not ready to be fished and must be monitored for growth and predation. Extra sampling, especially with the grab should be carried out to estimate tonnage.

Nicolas Chopin  
BIM Inshore Survey Officer  
Aquaculture Technical Section

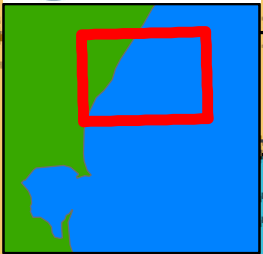
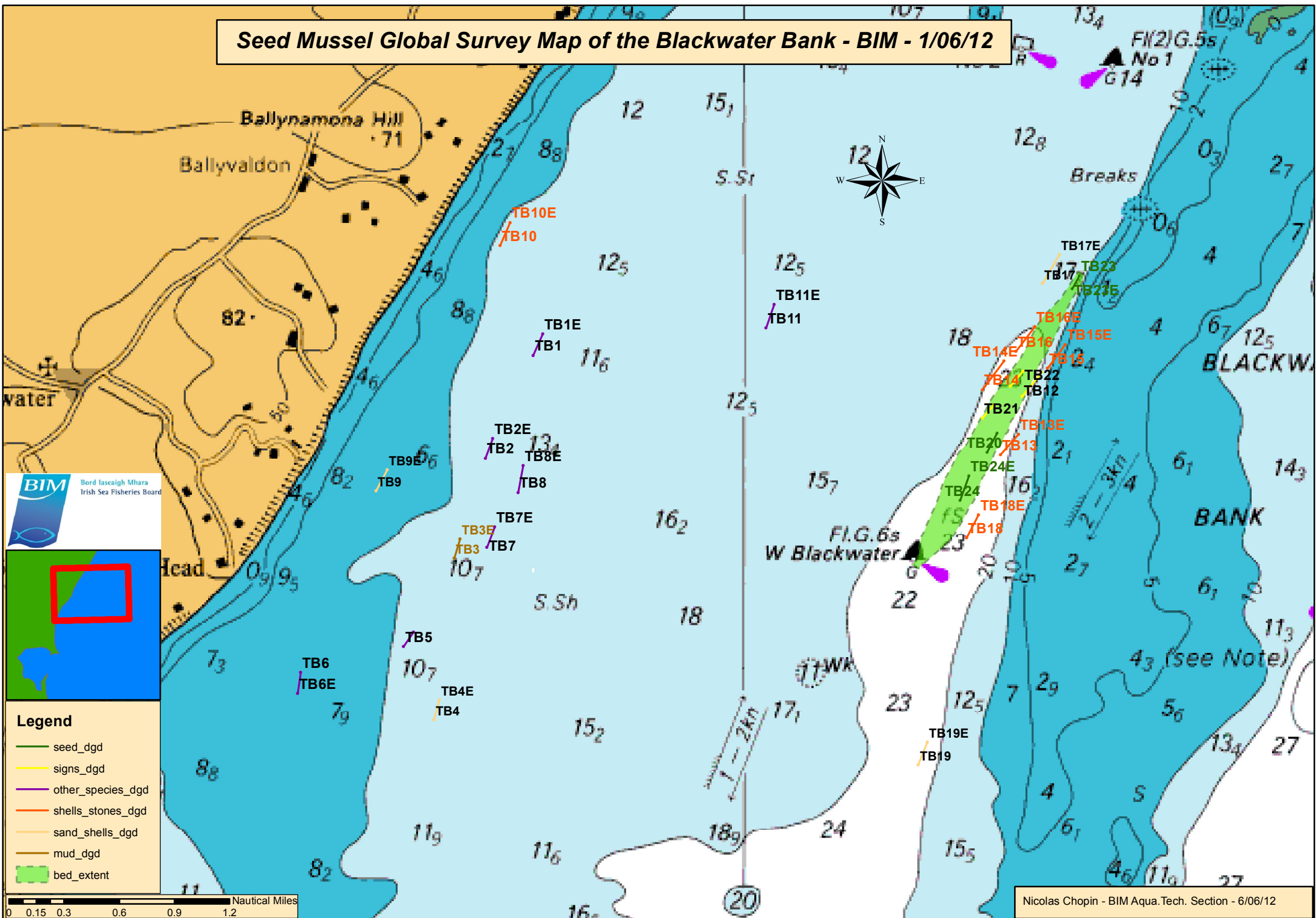
**Seed Mussel Survey Map of the Blackwater Bank - BIM - 1/06/12**



**Legend**

- seed\_dgd
- signs\_dgd
- other\_species\_dgd
- shells\_stones\_dgd
- sand\_shells\_dgd
- █ bed\_extent

# Seed Mussel Global Survey Map of the Blackwater Bank - BIM - 1/06/12



- Legend**
- seed\_dgd
  - signs\_dgd
  - other\_species\_dgd
  - shells\_stones\_dgd
  - sand\_shells\_dgd
  - mud\_dgd
  - bed\_extent

0 0.15 0.3 0.6 0.9 1.2 Nautical Miles

Nicolas Chopin - BIM Aqua. Tech. Section - 6/06/12