

Update: Tonnage Report for the Long Bank – 7/05/2019 - 13/05/2019

Vessel: MV T.Burke II (BIM), Skipper John Murphy, Survey Officers Nicolas Chopin, Adam Andrews.

Equipment: 1 meter dredge and 400 kHz side-scan sonar and 0.1 m² day grab

Area surveyed: East of the Long Bank

Survey summary:

The bed between the Long Bank and Lucifer Bank has extended in area to 126 hectares and has been quantified conservatively at 3500 tonnes.

- **East of the Long Bank:** There has been no seed mussel settlement in this area since 2011 and 2013, but the side-scan survey and tows made show good settlement of 2-14 mm seed on rocks, old oyster shells and hydroids in May. 77% of seed sampled is now between 26-34 mm in length. Starfish/no starfish were found in tows.

A total of 15 grabs were taken inside the main bed, mean = 28 tonne hectares. The total coverage of the bed is estimated at 126 hectares. The biomass of the bed therefore is estimated at 3500 tonnes. The bed is patchy and grabs were conducted under challenging weather conditions. Therefore, this estimate is conservative.

Table 1: Area coordinates (in Degrees, decimal minutes WGS84) from North to South:

- The settlement on the West of the Long Bank is in a North/South orientation approximately 3.5 km in length.

Latitude	Longitude
52 21.231194 N	-6 15.137207 W
52 21.200150 N	-6 14.774648 W
52 19.499773 N	-6 15.710976 W
52 19.405889 N	-6 15.178997 W

NOTE: The seed bed displayed on the attached map has been established following the side-scan sonar data verified by ground truthing. These coordinates are for each corner of a simplified polygon of the area of the settlement identified (the shaded green area on the map).

Bottom type: Mainly gravel with stones.

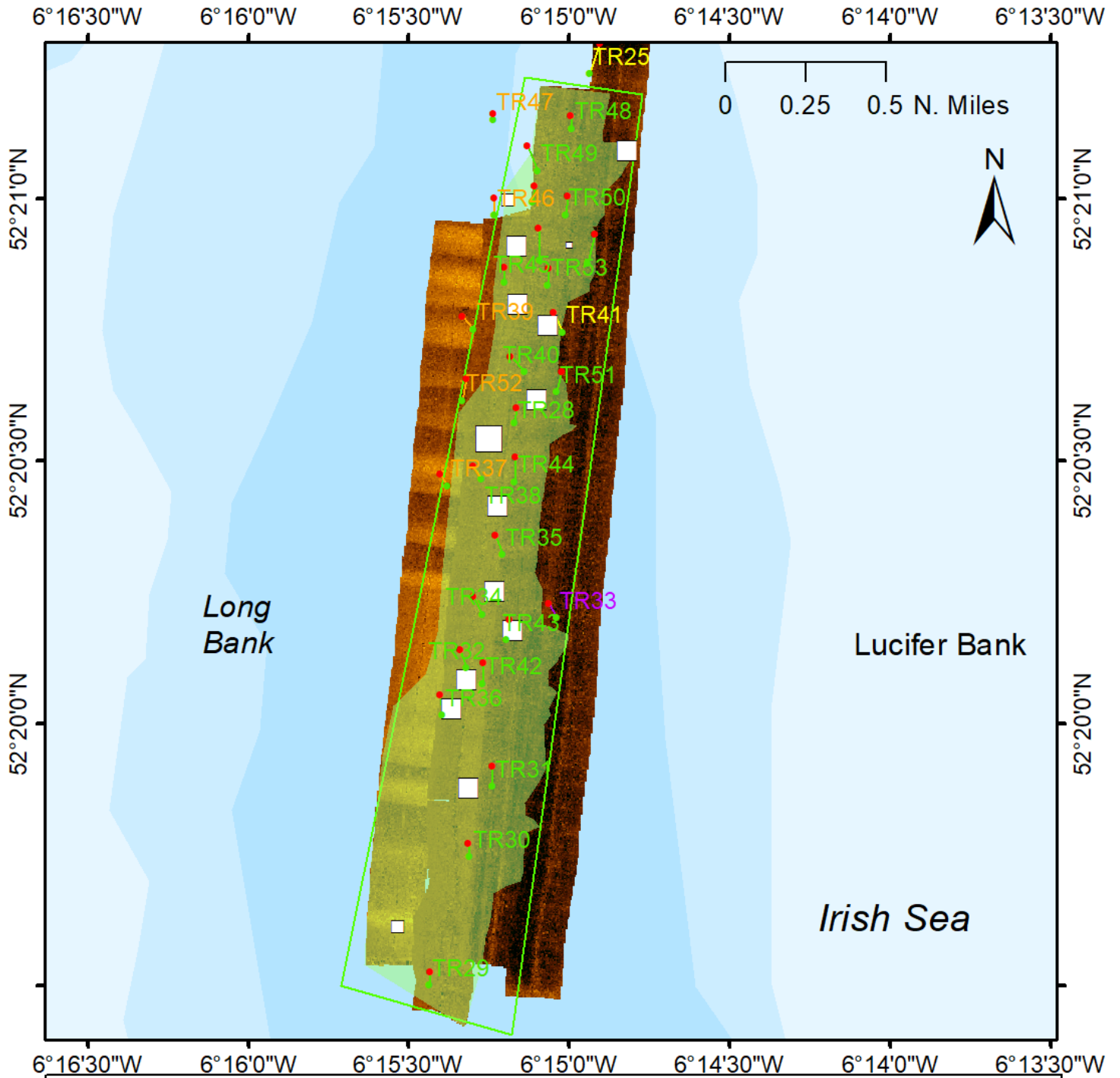
Recommendations:

Starfish have been found in tows nearby. This bed is ready to be fished.

BIM Inshore Survey Team
Seafood Technical Services and Business Unit

Notes for the map:

TR stands for Tow Rosslare
GR stands for Grab Rosslare



Seed Mussel Biomass Survey East of the Long Bank - August 2019

- Side Scan Survey Extent
- Seed mussel
- Possible Seed Bed
- Signs of seed mussel
- Tow End
- Other species only
- Tow Start
- Stones/shell only



NOT TO BE USED FOR NAVIGATION
 Map © Bord Iscaigh Mhara (BIM) 2019.
 Created by Adam J. Andrews.
 Projection: WGS 1984.

Depth (m)	Biomass (kg)
-1	< 0.3
> -10	0.3 - 0.5
-10 to -20	0.5 - 1
< -20	1 - 1.3

