

Seed Mussel Survey Update for the Southeast Coast for the period 21/06/2018 – 27/07/2018

Rosslare/ Long Bank/Bar Buoy: (see map)

The three areas were checked from the 21st of June to the 16th of July using side scan sonar and the dredge. No seed was found at the Bar buoy, on the northwest side of the Long Bank or on the north side of the channel between the Long Bank and the Lucifer Bank.

A very small quantity of young seed was found in the South Shear in Rosslare at the following location:

52 15.270 N by 006 18.253 W

At the time of the survey, it was not possible to estimate the extent of the area as the seed was too small (5 to 8 mm) and settled on few stones collected in the dredge.

The area has not been checked since.

Blackwater:

An extensive side scan sonar survey was carried out along the shore near the 2013 seed mussel patches as well as on the west side of the Blackwater bank. Very light traces of young spat were observed in one location alongside the shore. There no other seed observed in the area.

Rusk Channel/Cahore: (see map)

(See detailed online report <http://www.bim.ie/media/bim/content/publications/aquaculture/BIM-Seed-Mussel-Survey-Report-for-Cahore-Point-July-18.pdf>)

In addition, scattered seed was found around the Buoy No. 4 in the Rusk Channel between the following coordinates:

52 30.876 N by 006 10.724 W to 52 31.518 N by 006 10.270 W

The seed is the same size as that found further south. The settlement is more scattered and the seed has settled on small stones. There were no predators observed.. The area will be surveyed again later in the season.

Glassgorman/Courtown:

Side scan sonar was deployed in the area where seed mussel was found in 2017 and 2015. Few marks were investigated but no seed was found.

South Wicklow: (see map)

The sides scan sonar was deployed in the area where seed mussel was found last year. The survey coverage was impeded by static fishing gear in the area but nevertheless, scattered seed mussel was found at the location. The seed has settled on small stones and there are a lot of starfish around. Traces of last year's settlement were observed but in small quantities and showing a lot of mortality probably due to the starfish.

The new seed seemed in good condition at the time of the survey (last week of July 2018). The area could not be estimated due to weather conditions and fishing gear. The current size is similar to the seed found in the south Rusk Channel.

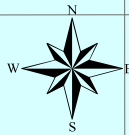
The area will be surveyed again in few weeks' time to assess growth, mortality and extent of a possible bed.

Recommendations:

These settlements need to be monitored for predator impact and growth. It is too soon to carry out tonnage estimation as the seed is still small and scattered. Those areas will be resurveyed before the fishery starts.

Nicolas Chopin
BIM Inshore Survey Officer
Seafood Technical Services and Business Unit

Seed Mussel Survey Map for North Rusk Channel - BIM - 3 to 5/07/2018



TC2
TC2E

TC30
TC30E

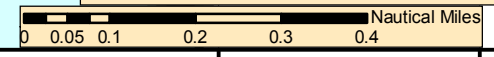
TC31
TC31E

TC33
TC33E

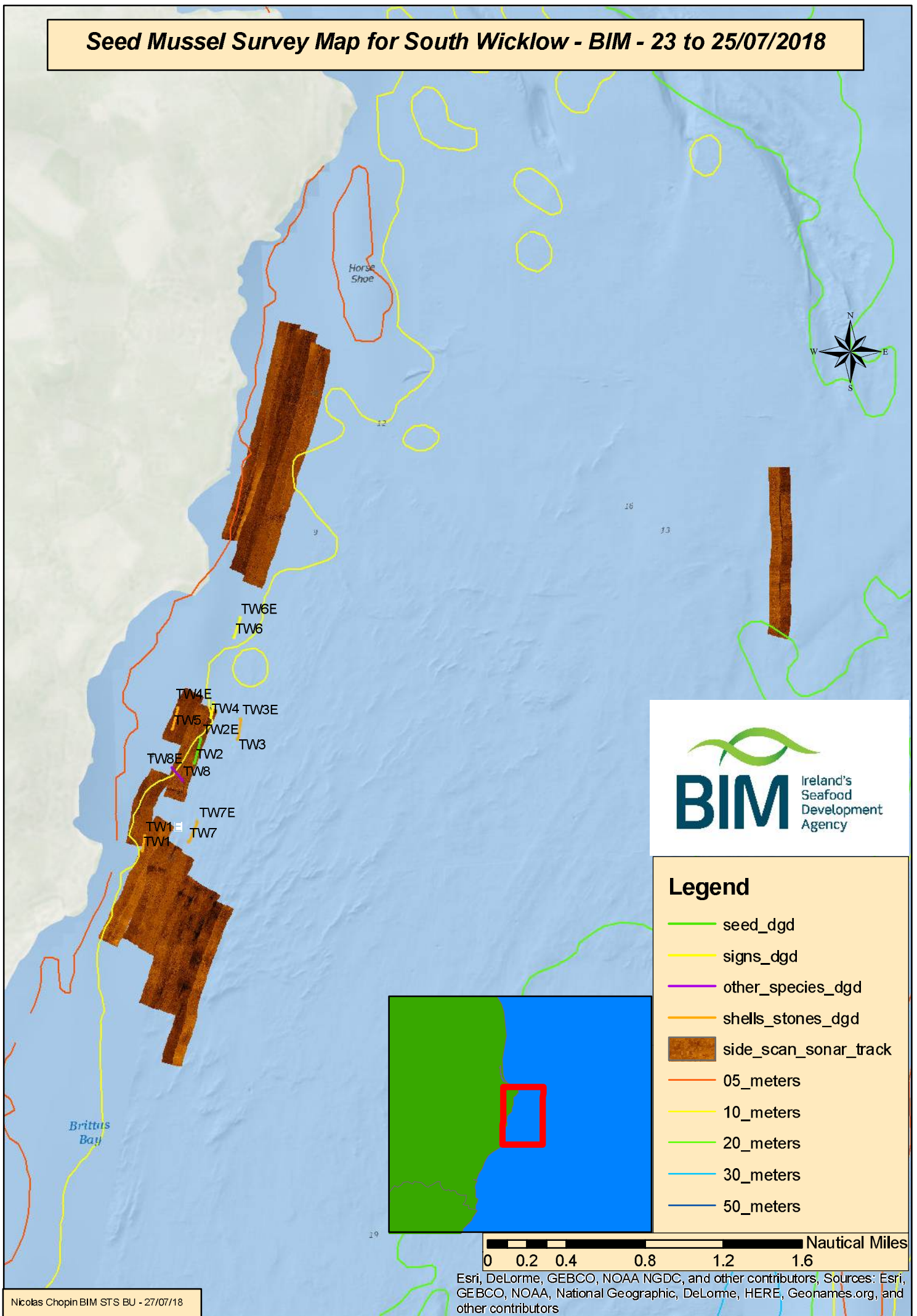


- ### Legend
- signs_dgd
 - seed_dgd
 - other_species_dgd
 - stones_shells_dgd
 - side_scan_sonar_track

Nicolas Chopin BIM STSBU division - 27/07/2018

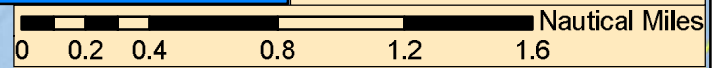
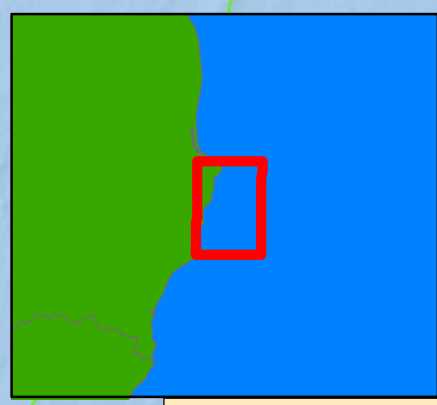


Seed Mussel Survey Map for South Wicklow - BIM - 23 to 25/07/2018



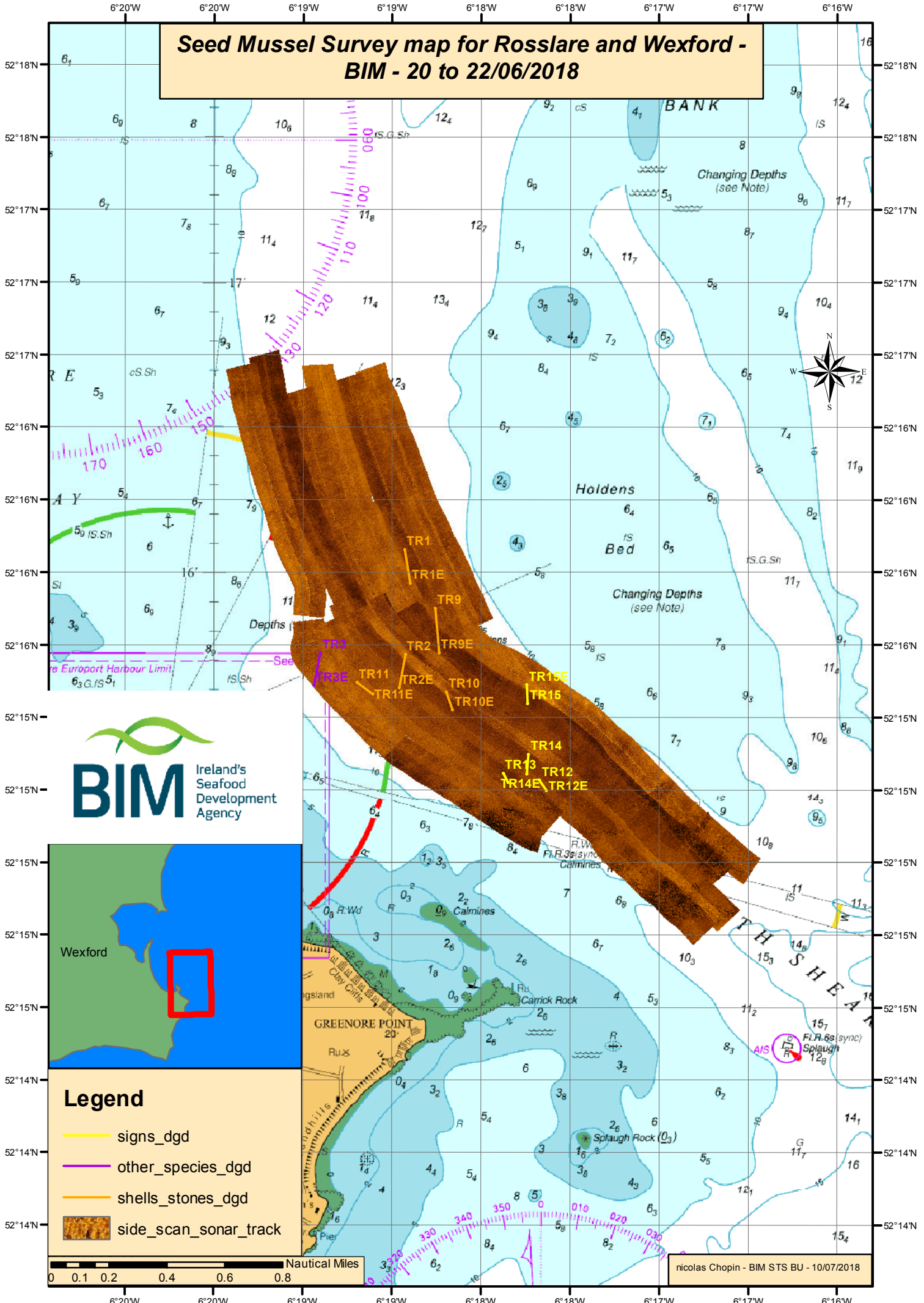
Legend

- seed_dgd
- signs_dgd
- other_species_dgd
- shells_stones_dgd
- side_scan_sonar_track
- 05_meters
- 10_meters
- 20_meters
- 30_meters
- 50_meters



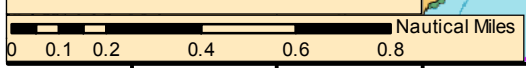
Esri, DeLorme, GEBCO, NOAA NGDC, and other contributors, Sources: Esri, GEBCO, NOAA, National Geographic, DeLorme, HERE, Geonames.org, and other contributors

Seed Mussel Survey map for Rosslare and Wexford - BIM - 20 to 22/06/2018



Legend

- signs_dgd
- other_species_dgd
- shells_stones_dgd
- side_scan_sonar_track



nicolas Chopin - BIM STS BU - 10/07/2018