

Preliminary Seed Mussel Survey Report for Rosslare and Wexford approaches – 7 to 14/05/2019

Vessel: MV T.Burke II (BIM), Skipper John Murphy, Survey Officers Nicolas Chopin, Adam Andrews.

Equipment: 1 meter dredge and 400 kHz side-scan sonar

Area surveyed: East and West of the Long Bank, and the South Shear

Survey summary:

This survey is preliminary, as what has been found so far will need time to grow. A quantitative survey will be carried out later in the summer.

- South Shear (Rosslare): There was no known seed mussel settlement last year in the South Shear; but as part of this preliminary survey, this area was checked. A total of 5 tows were made, where 3 contained traces, and one contained signs, of newly settled seed (2-5 mm).
- West of the Long Bank: There has been no seed mussel settlement in this area since 2011 and 2013, but the side-scan survey and tows made show good settlement of 2-14 mm seed on rocks, old oyster shells and hydroids. A total of 12 tows were made, where 6 contained dense settlement of seed, and 3 contained signs of seed. The tows show an absence of predators at this stage.
- East of the Long Bank: The beds of 2014 and 2016 were checked using a total of 5 tows. These contained no signs of seed mussel, though pots restricted dredging in the center of the old beds. Further tows will be made later in the summer.

Table 1: Area coordinates (in Degrees, decimal minutes WGS84) from North to South:

- The settlement on the West of the Long Bank is in a North/South orientation approximately ~1.5 km in length.

Latitude	Longitude
52° 20.746' N	6° 15.245 W
52° 19.663' N	6° 15.165' W

NOTE: The seed bed displayed on the attached map has been established following the side-scan sonar data verified by ground truthing. These coordinates are for each corner of a simplified polygon of the area of the settlement identified (the shaded green area on the map).

Bottom type: Mainly gravel with stones.

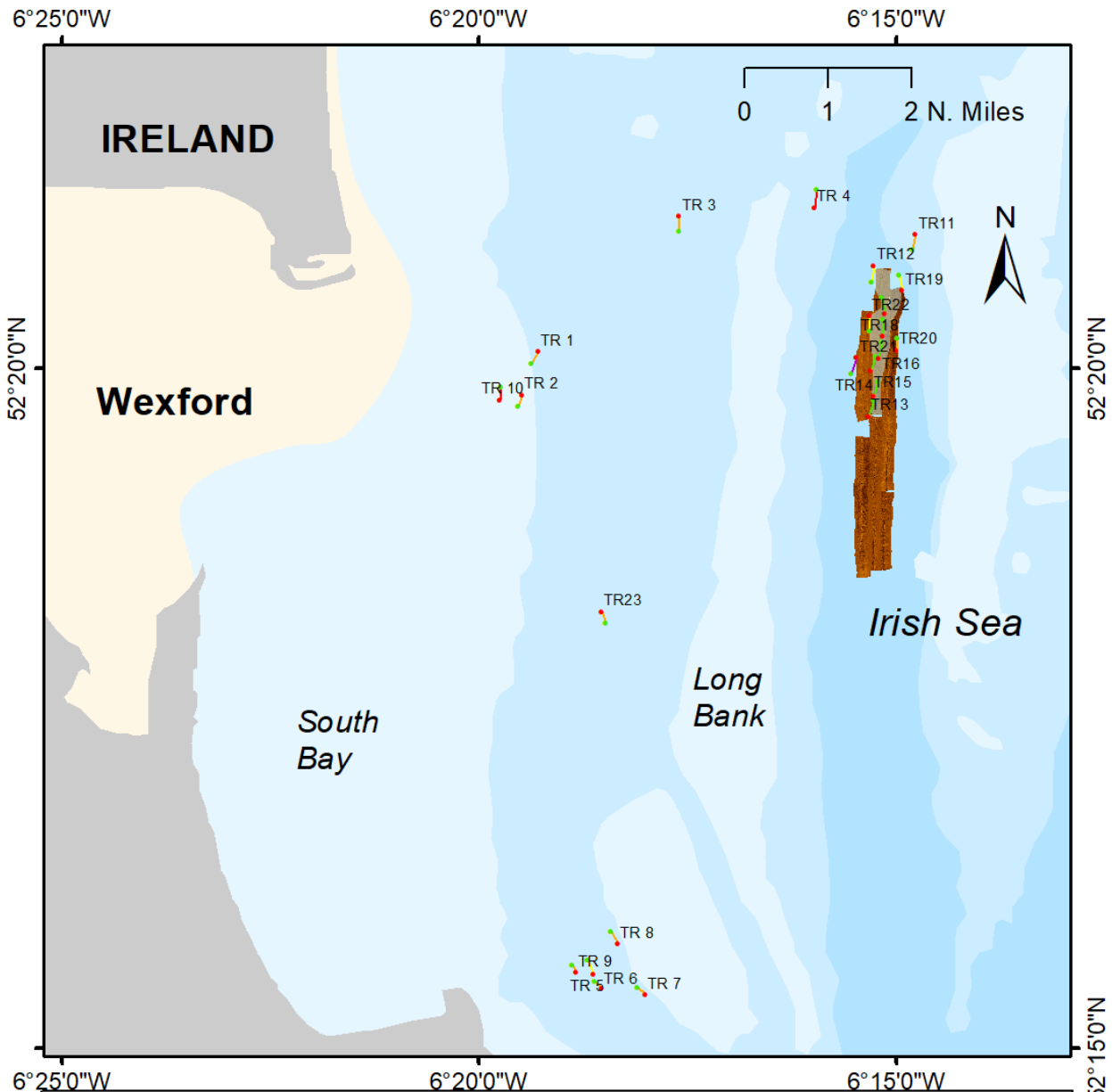
Recommendations:

The settlements need to be monitored for predator impact and growth. It is too soon to carry out tonnage estimation as the seed is still small. The areas will be resurveyed before the fishery starts.

BIM Inshore Survey Team
Seafood Technical Services and Business Unit

Notes for the map:

TR stands for Tow Rosslare



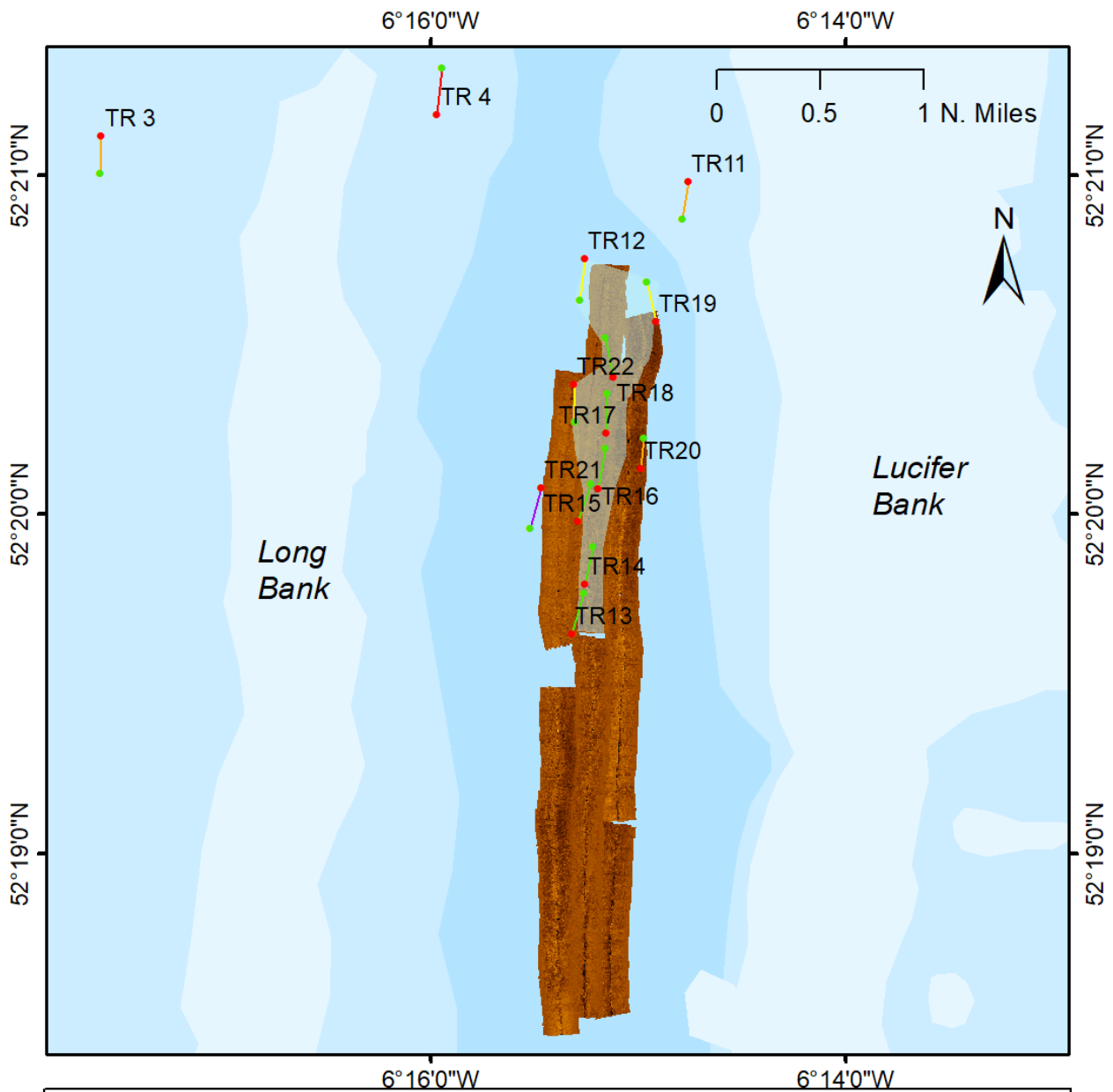
**Preliminary Seed Mussel Survey
Rosslare - May 2019**

- Possible Seed Mussel Bed
- Side Scan Survey Extent
- Tow Start
- Tow End
- Seed mussel
- Signs of seed mussel
- Other species only
- Stones/shell only
- Empty

Depth (m)

- 1
- 10 to -20
- > -10
- < -20





**Preliminary Seed Mussel Survey
Rosslare - May 2019**

- Possible Seed Mussel Bed
- Side Scan Survey Extent
- Tow Start
- Tow End
- Seed mussel
- Signs of seed mussel
- Other species only
- Stones/shell only
- Empty

Depth (m)

- 1
- 10 to -20
- > -10
- < -20

