

## **Seed Mussel Survey Report for the Rosslare Area – 7 and 8/04/2011**

**Vessel:** MV T'Burke (BIM), skipper John Murphy, survey officer Nicolas Chopin

**Equipment:** 400 kHz Side Scan Sonar, 1 meter dredge.

### **Area Surveyed:**

The Rosslare Channel, between land and the Long Bank, between the Long Bank and the Lucifer Bank and the Long Bank SAC.

### **Survey Summary:**

An extensive side scan sonar survey has been carried out in the channel between Rosslare Harbour and the Long Bank SAC, on the seed beds found in 2008 and 2009. Tows were made on features marked on the side scan sonar data. No visible seed or mussels were found in the dredges' sample; however some spat (post larvae) could have been present on the site, but this couldn't be confirmed.

The side scan sonar was then deployed on the eastern edge of the Long Bank, the data only showed sand ripples.

No seed was currently found during this survey.

**Bottom type:** The seabed in the channel has become very hard, the sand and mud have been cleared from the rocks.

On the 2007 bed (mid west of the Long Bank), the ground remains unchanged with mud and clay.

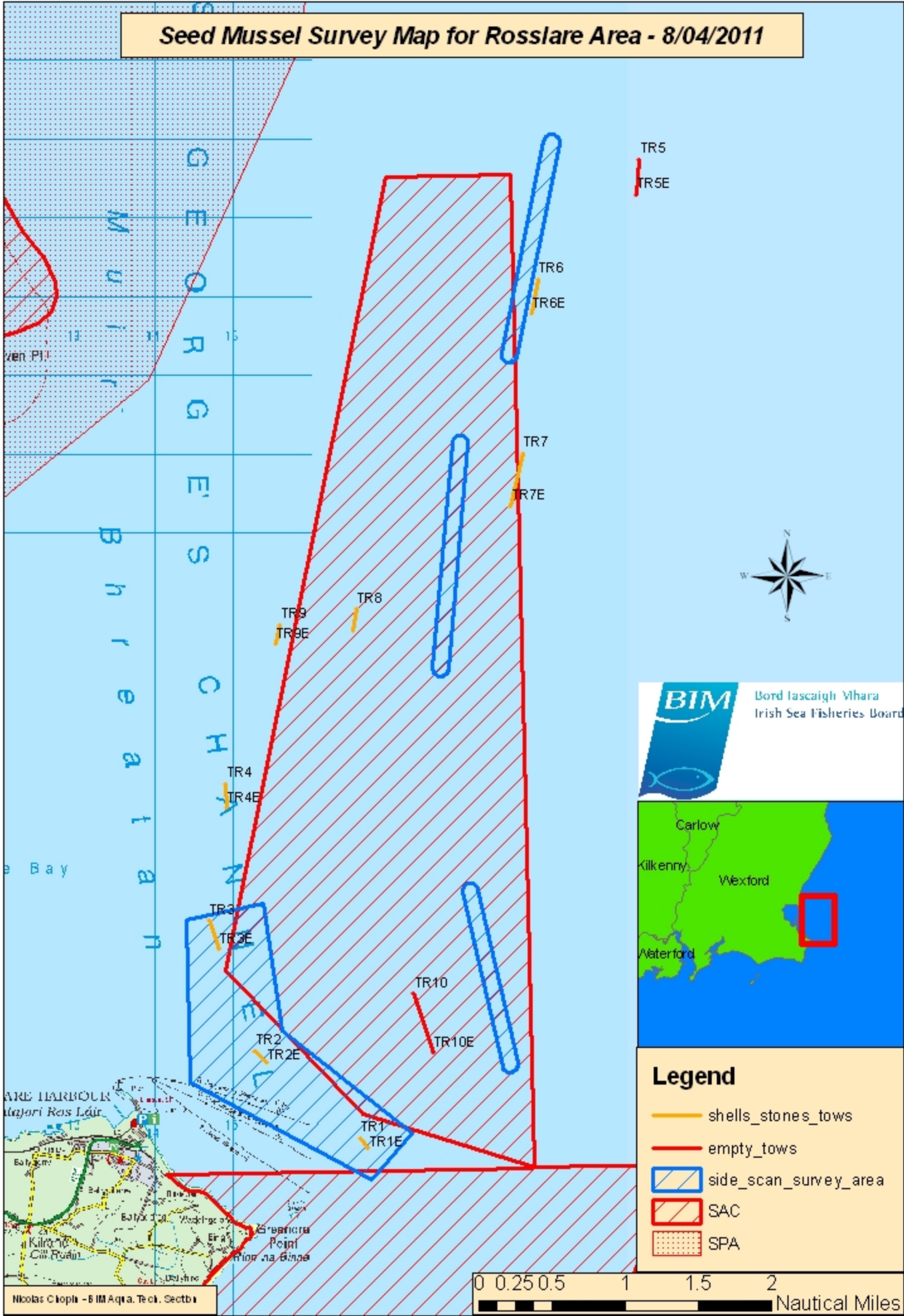
Mainly sand ripples on the eastern side of the bank.

### **Recommendations:**

Although nothing was found during this survey, a second one will be carried out later in the season.

Nicolas Chopin  
BIM Aquaculture Technical Section

**Seed Mussel Survey Map for Rosslare Area - 8/04/2011**



Nicolas Ciopla - BIM Aqta. Teic. Seolta